



APRIL 2024

AT THE LIBRARY

Out of the utmost concern for the safety of all customers and staff, all locations will be closed on Mon. Apr. 8.

To create the next chapter of your Ontario Library!



**WE
ARE
MOVING!**
TEMPORARILY

The Ontario location will be closed **April 22**.
On **May 6** you will find our full collection, helpful staff, programming, and resources at the Richland Mall, 2209 Richland Mall.
We recommend parking on the Stumbo Rd. side, south entrance.

Our outdoor book return box will be at the mall location entrance as of April 22.

mrcpl.org

ADULT BOOK GROUPS



Bromfield Book Club
Mon. Apr. 1, 6 PM
The Little Liar by M. Titch Albom

Butler

Bellville Book Club
Tue. Apr. 2, 10 AM
Tom Lake by Ann Patchett

Well Read
Tue. Apr. 2, 6:30 PM **Lexington**
The Nightingale by Kristin Hannah

Shelf Indulgence
Sat. Apr. 6, 10 AM **Madison**
The Midnight Library by Matt Haig

Bits of Books
Wed. Apr. 10, 2:30 PM **Lexington**
 Join us as we share what we've been reading and leave with a great book list.

Book Buzz
Thu. Apr. 11, 12 PM **Plymouth**
Return of the Bison
 by Roger Di Silvestro

CRAFTY ATTIC



★ **Flower Pot Totem**
Thu. Apr. 4, 2 & 6 PM **Main**
Tue. Apr. 9, 6 PM **Lucas**
Thu. Apr. 11, 6 PM **Crestview**
Mon. Apr. 15, 6 PM **Plymouth**
Thu. Apr. 18, 2 PM **Ontario**
Tue. Apr. 23, 6 PM **Butler**
Thu. Apr. 25, 6 PM **Madison**
Mon. Apr. 29, 6 PM **Bellville**
Tue. Apr. 30, 2 & 6 PM **Lexington**

With a drawer pull and some sparkly beads, you will design a beautiful totem for your spring flower pots! All supplies included.

ADULT ONLY PROGRAMS



★ Pollinators 101

Mon. Apr. 1
Thu. Apr. 4
Tue. Apr. 9
Tue. Apr. 16
Mon. Apr. 22
Thu. Apr. 25
Mon. Apr. 29
6 PM

If you want to attract certain native butterflies and other pollinators to your yard, this program is for you! Learn how to grow a successful pollinator garden, which plants are host to specific butterflies, and plant your own stratified milkweed seeds.

Bellville
Plymouth
Lexington
Lucas
Main
Crestview
Butler

★ Hello Spring Porch Leaner

Thu. Apr. 4
Tue. Apr. 9
Wed. Apr. 10, 2 PM
Thu. Apr. 11
Mon. Apr. 15
Tue. Apr. 16
Thu. Apr. 18
Tue. Apr. 23
Thu. Apr. 25
6 PM

Tina & Co. will be here to guide you in creating a cheerful, wooden porch leaner just in time for spring! All supplies included.

Madison
Crestview
Ontario
Butler
Bellville
Lexington
Main
Lucas
Plymouth

What is a Rain Garden?

Tue. Apr. 30, 6 PM **Main**
 Join Dan Herrold of Richland Soil & Water Conservation District, as he discusses rain gardens, how to start one, and their benefits to your home. Rain barrel information will also be available.

★ Registration required.

Register on our event calendar
at mrcpl.org
unless otherwise noted.
Registration begins Mar. 18.

ADULT MONTHLY PROGRAMS



Finish It Friday

Fri. Apr. 5, 19

Fri. Apr. 12

Fri. Apr. 26

1-4 PM

Need incentive to finish that project you're working on? Bring it to the Library!

Butler
Lexington
Lucas

Trivia Night at Brumby's

Thu. Apr. 4, 6 PM

Join us for this family-friendly trivia night at Brumby's Coffeehouse & Pizzeria in Bellville. Test your knowledge with an evening of questions. Teams of 5 or less.

Euchre Night

Thu. Apr. 11

Thu. Apr. 18

Mon. Apr. 22

5:30 PM

All skill levels are welcome for this ageless strategic card game!

Lucas
Butler
Bellville

Yarn Creations

Mon. Apr. 15, 3 PM

Bellville

Meet up with other yarn crafters to share, talk, knit, and crochet. Bring your own supplies and enjoy!

Taproom Trivia at The Phoenix

Tue. Apr. 16, 6:30 PM

Adults 21+

Join us for our popular trivia night at The Phoenix Brewing Co. Test your knowledge or guessing skills as we work through a variety of categories. Teams of 5 or less.

Burger & Brew Trivia

Thu. Apr. 18, 6:30 PM

Join us for trivia night in the Hudson & Essex winery. Test your knowledge with an evening of questions. Teams of 5 or less.

Cookbook Club

Sat. Apr. 20, 11 AM

Plymouth

Spring vegetables! Asparagus, radishes, leeks, carrots, and more are making an appearance, so we're whipping up our favorite recipes calling for spring vegetables. Bring a copy of the recipe and a serving utensil.

Game Night @ the Library

Thu. Apr. 25, 5:30-7:30 PM **Main**

Join us at the Library for an enjoyable night of games! Bring a friend or make new ones as we play *Carcassonne* this month. A variety of other card and board games will also be available.

LEARNING LAB TECH CLASSES



🌟 Register online at mrcpl.org or call 419.521.3146 to reserve your seat. All classes are held at the Main Library unless otherwise noted.

Excel – Beyond the Basics

Wed. Apr. 10, 9:30-11 AM

Extend your knowledge with new functions, advanced formatting, filtering, sorting, and charts.

Internet – Advanced

Thu. Apr. 11, 9:30-11 AM

Join us as we take a deeper look at topics such as cloud data storage, blockchain, cryptocurrencies, and more.

Canva Workshop: Event Planning

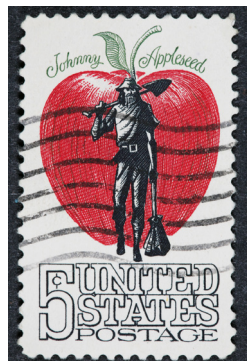
Wed. Apr. 17, 9:30-11 AM

Want to personalize your next party or event? Join us to learn how to use *Canva* to make invitations, flyers, signage, or whatever else you may need for your upcoming spring/summer events (grad parties, weddings, garage sales, etc.).

Excel – Advanced

Wed. Apr. 24, 9:30-11 AM

Learn about logical functions, conditional formatting and pivot tables.



Johnny Appleseed 250th Birthday Celebration Exhibit

Mar. 11-Apr. 20, Full exhibit

Mar. 11-16, Partial exhibit

Mar. 18-23, Partial exhibit

Mar. 25-30, Partial exhibit

Apr. 1-6, Partial exhibit

Apr. 9-13, Partial exhibit

Main Library

Bellville

Butler

Lexington

Madison

Plymouth

The Johnny Appleseed Historic Byway, a scenic route that passes through many of the places where the legendary nurseryman lived and worked, is proud to announce a special traveling exhibit to commemorate his 250th birthday in 2024.

The exhibit, which will be available on loan to various locations along and near the byway, will feature historical artifacts, photos, maps, and interactive displays that showcase the life and legacy of Johnny Appleseed. Visitors will learn about his contributions to the development of the region, his relationship with the Native Americans and the pioneers, his love of nature and apples, and his enduring influence on American culture and folklore.

The byway aims to preserve, conserve, and promote the scenic, cultural, historical, natural, architectural, archaeological, and recreational resources of Ashland and Richland counties, Ohio. Join us in honoring one of America's most beloved heroes and discover the beauty and history of the Johnny Appleseed Historic Byway.



Spring Photo Backdrop

Mar. 14-Apr. 20

Take your own spring family photos using our absolutely stunning photo backdrop! Everything you need is included to create beautiful photos, you just provide your own camera or phone to snap your pics. Our spring backdrop will be available at the Main Library 2nd-floor lobby during open business hours.



mrcpl.org

TEEN PROGRAMS



Fakémon

Bag Pick Up Begins Mon. Apr. 1
Mon. Apr. 29, 6 PM **Lexington**
Grades 6-12

Create your own fantastical, kick-butt creature out of modeling dough. These are just like your favorite anime characters, except it will be your unique creation. Everything needed for your Fakémon creature will be included in the Program in a Bag at all locations; while supplies last.

Friendship Bracelets

Thu. Apr. 11, 3-5 PM **Lexington**

We're sorry to say that T-Swift won't be here, but we will still have fun making bracelets for all of our friends!

K-Pop Trivia

Thu. Apr. 11, 3:30 PM **Main**
Wed. Apr. 24, 2:30 PM **Madison**

Are you a huge K-pop stan or new to K-pop altogether? Don't be an "anti," join us for K-pop trivia to test your knowledge, learn a little more about your favorite groups, or bias, and meet some like-minded stans. Maybe even win some cool prizes!

Pokémon Terrariums

Mon. Apr. 15, 3-5 PM **Crestview**
Tue. Apr. 16, 3 PM **Plymouth**

Drop in and make a special *Pokémon* terrarium! While supplies last.

Pringles Taste-Testing

Sat. Apr. 21, 2:30 PM **Main**

Once you pop, the fun don't stop! Swing by to taste a variety of flavors and vote for your favorite chip; while supplies last.

TEEN MONTHLY PROGRAMS



Harry Potter Book Club

Tue. Apr. 2, 4 PM **Lexington**

Tweens & Teens

Join us each month as we read our way through the *Harry Potter* series by J.K. Rowling. Please come prepared to discuss *Harry Potter and the Half-Blood Prince*.

Anime Club

Thu. Apr. 11, 5 PM **Main**

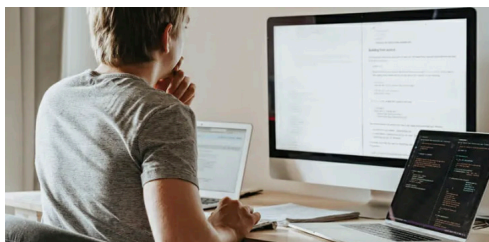
Some anime may be rated TV-14 or M for mature teen audiences.

We will show the first 2 episodes of different themed anime with a side of free imported Japanese snacks. April's theme: The Chosen One.

Manic Monday

Mon. Apr. 15, 3:30 PM **Main**

Life as a teenager can be hard, and that is why you can count on us for relaxing activities with **free snacks**! We will provide activities designed to help you find your chill. Find us in the 2nd-floor conference room.



**Highschoolers,
 we have helpful
 resources
 for taking the
 ACT, completing
 financial aid
 applications,
 and more.**





★ **Gnome Hunting at the Library**
Thu. Apr. 11, 10:30 AM & 3:30 PM

Lucas

Mon. Apr. 15, 4-7:30 PM Lexington
Thu. Apr. 18, 6 PM Bellville

Calling all detectives! Come ready to use your super-sleuthing skills to find all of the gnomes we've hidden, and there will be a craft for you to make and take home.

Celebrate Geologist Day

Thu. Apr. 11, 2-4 PM

Main

Do you like fossils, rocks, and gemstones? Become a geologist by digging up a fossil and participating in activities with us!

Spring into Art for Little Ones

Thu. Apr. 18, 10 AM

Main

Ages 6 mo.-Pre-K

Let's get creative! Drop in and make some simple art projects with your little one.

Fairy Garden Extravaganza

Thu. Apr. 18, All Day

Lucas

★ **Sat. Apr. 20, 1:30 PM**

Madison

Come explore the fairy kingdom. Immerse yourself in the magic of fairies through stories and interactive activities. All you need is a little fairy dust and your imagination!

Bunny Fun

Fri. Apr. 19, All day

Main

Are you as hoppy as a bunny? Test your skills and meet other bunny loving friends.

Smokey Bear Reading Challenge

Mon. Apr. 22

All locations

Help Smokey celebrate his 80th birthday this year! Stop by any location beginning Apr. 22 to learn more!

Earth Day Art Collaboration

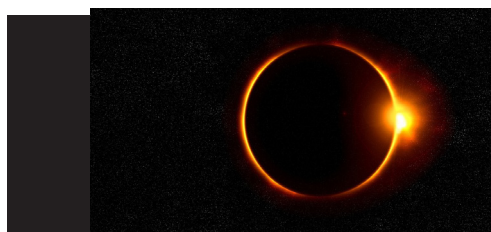
Mon. Apr. 22, All day

Main

We'll make a collaborative art project to celebrate Earth Day. Stop in to create and contribute!

★ **Registration required.**

For children's programs only, please call the Library location directly to register. Registration begins Mar. 18.



Get ready for the solar eclipse with the Library!

April 1-6

All locations

All library locations will distribute COSI Connects Space Kits and COSI Little Kid Kits: A Space Story. (One per child; while supplies last.) Interact with drop-in solar eclipse-related activities throughout the week, as well as a space scavenger hunt.

Space Scavenger Hunt

Apr. 1-6

All locations

Celebrate outer space! Locate all the pictures and earn a small prize.

★ **Mommy & Me Yoga**

Tue. Apr. 9, 10:30 AM & 1:30 PM

Madison

Toddlers/Pre-K with Caregiver

Move your body with us as we move through different activities, finishing with a gratitude craft. Please wear comfortable clothes and bring a towel to sit on.

National Library Week Drop-In

Apr. 9-13

Madison

Drop in to tell us why you love your library and make a special bookmark craft!

Earth Day Slime

Mon. Apr. 22, 3-5 PM

Lexington

Grades K-3

Drop into the Library to make some green slime for Earth Day! A container will be provided for you to take your slimy creation home with you. (Note: The slime is made with pudding mix.)

★Stuffed Animal Sleepover

Mon. Apr. 22, 6 PM

Crestview

Tue. Apr. 23, 6 PM

Plymouth

Thu. Apr. 25, 4 PM

Butler

Bring your (second-favorite) stuffed animal and come in your jammies! We will read stories about bedtime and do a craft together. Then, leave your stuffed animal at the Library to see what sort of mischief it gets into with its new friends. Come back the next day to retrieve your stuffed animal and receive a special photo!

National Mr. Potato Head Day

Tue. Apr. 30, All day

Main

Don't be a couch potato! Come celebrate our favorite spud with fun activities and a scavenger hunt.

CHILDREN'S MONTHLY PROGRAMS



Crafty Kids

Month of April

Ontario

Stop in anytime to make a frog craft!

LEGO® Club

Mon. Apr. 1, 5-7:30 PM

Lexington

Wed. Apr. 3, All day

Bellville

Thu. Apr. 4, All day

Ontario

Wed. Apr. 10, All day

Plymouth

Mon. Apr. 15, All day

Madison

Tue. Apr. 23, All day

Lucas

Wed. Apr. 24, 3-5 PM

Butler

Grades K-5

Join the Library LEGO® club! Spend some time exercising your mad building skills with friends.

S.T.E.A.M. Club

Mon. Apr. 1, 1-7 PM

Lucas

Join us for new challenges and activities each month! We will try Sphero, coding investigations, and a multitude of other science, technology, engineering, arts, and math related activities and challenges.

Mini Makers

Tue. Apr. 2, All day

Plymouth

Thu. Apr. 4, All day

Crestview

Tue. Apr. 9, All day

Main

Mon. Apr. 15, All day

Lucas

Tue. Apr. 16, 3-5 PM

Butler

Fri. Apr. 19, 1-4 PM

Madison

Thu. Apr. 25, 3-7 PM

Bellville

Do you like crafts? Join us at the Library for a new craft each month!

Story Time at BIM

Wed. Apr. 3, 1 PM

Join our children's staff the first Wed. of each month for a fun story time at the Buckeye Imagination Museum. (Museum admission is required.)

★Stepping Stones

Fri. Apr. 12, 10:30 AM

Lexington

Children ages 4 & 5

Read stories, sing, and do activities that focus on animals and Kindergarten readiness skills.

Monday Crafternoon

Mon. Apr. 15, 12-4 PM

Ontario

Stop by to make an Earth Day craft.

Move & Groove

Sat. Apr. 20, 10 AM

Main

Come join us as we move our bodies to a story or two and groove to some really great tunes!

Books Alive Story Time

Wed. Apr. 24, 11 AM

Main

Pre-K-Grade 3

This unique story time geared toward older children will offer themed stories and activities to bring books to life.

Friends of the Library Evergreen Bookshop Sale

Members Only Sale:
Thu. Apr. 4 12-4 PM

Public Sale:
Fri. Apr. 5 12-4 PM
Sat. Apr. 6 9 AM-1 PM

Become a Member for only
\$3 per year. Get amazing
discounts on gently used library
materials and shop early!
Join at the sale.



Follow us on
social media to join
interactive groups,
share what you're
reading, and see
what's new at
MRCPL!



Mansfield/Richland County
Public Library

YOUR LIBRARY. ANYWHERE. ANYTIME.

Download the free app and search the
catalog, place holds, and manage your
account. Search the event calendar for a
program near you and register on the
spot. Plus, you can store your library card
on your mobile devices, link multiple
cards, and check branch locations and
hours. It's your library at your fingertips.

Download the Mans/Richland
County Library app today!



LIBRARY HOURS



Main Library 419.521.3100
Mon.-Thu. 9 AM-8 PM
Fri. & Sat. 9 AM-5 PM
Sun. 1-5 PM

Bellville Branch 419.886.3811
Lexington Branch 419.884.2500
Madison Branch 419.589.7050
Ontario Branch 419.529.4912
Mon., Tue., Thu. 9 AM-8 PM
Wed., Fri. & Sat. 9 AM-5 PM
Sun. (Ontario only) 1-5 PM

Butler Branch 419.883.2220
Crestview Branch 419.895.0010
Lucas Branch 419.892.2576
Plymouth Branch 419.687.5655
Mon., Tue., & Thu. 9 AM-8 PM
Wed., & Fri. 9 AM-5 PM
Sat. 9 AM-1 PM

mrcpl.org